

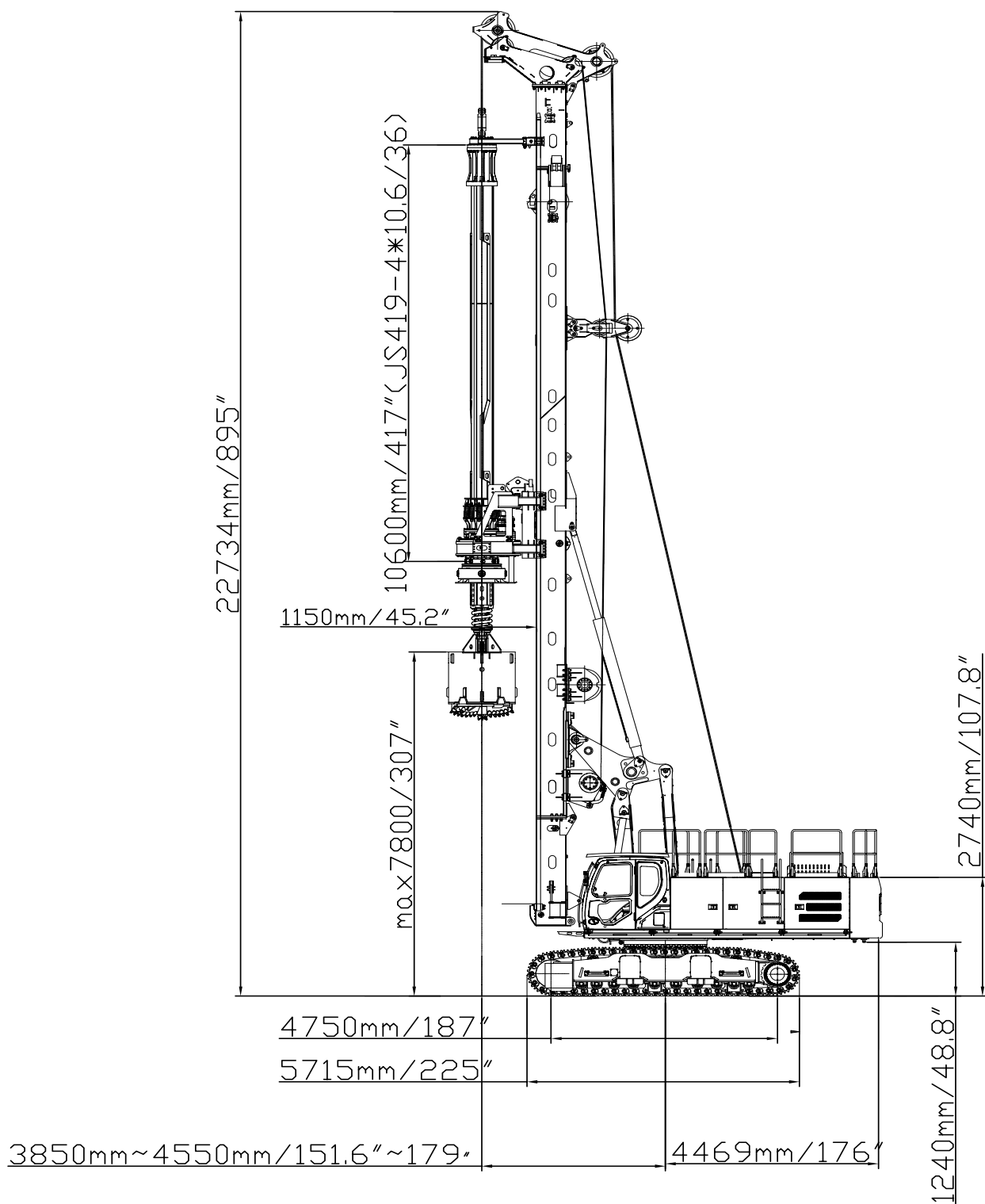


XC-85B

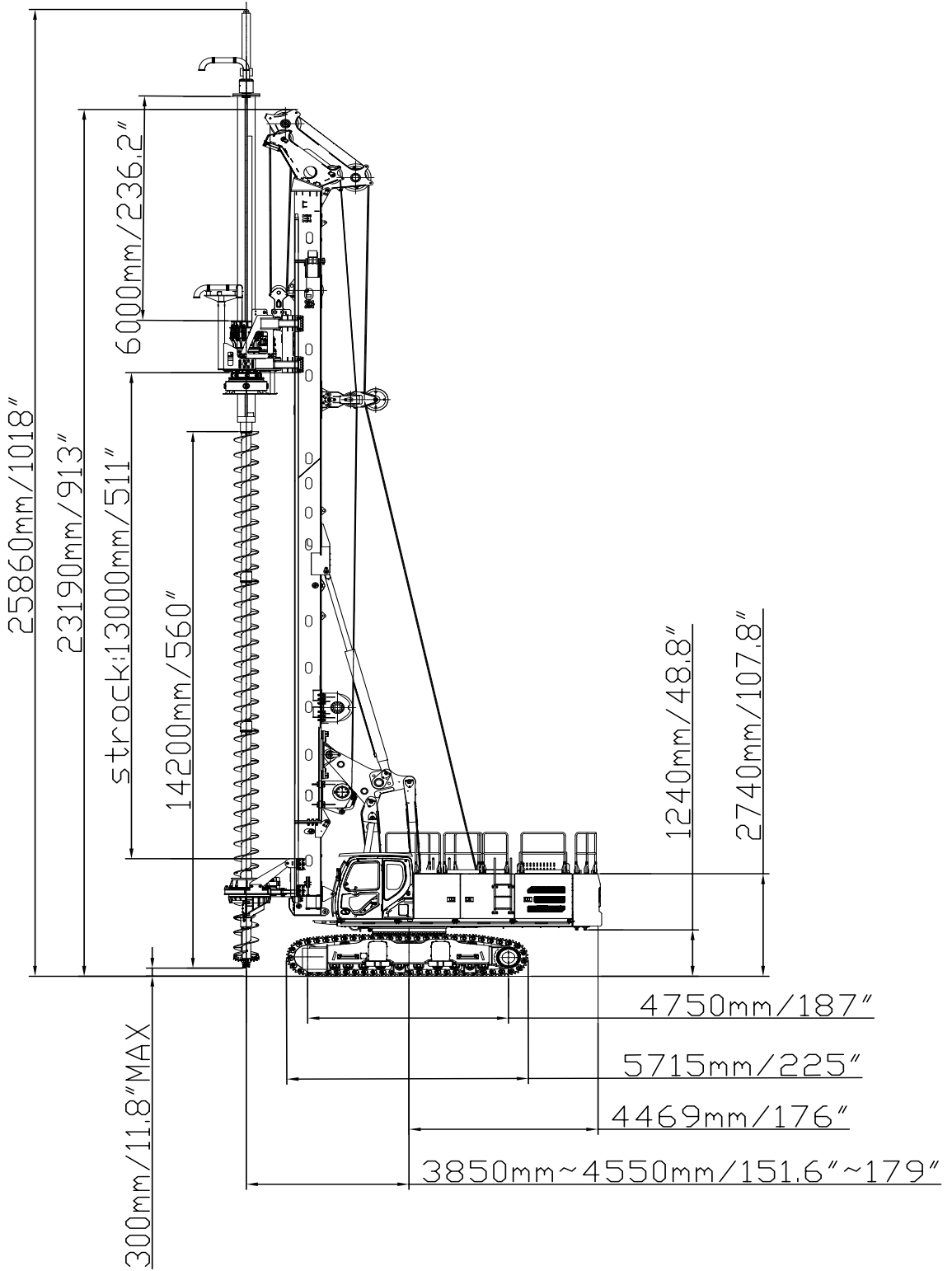


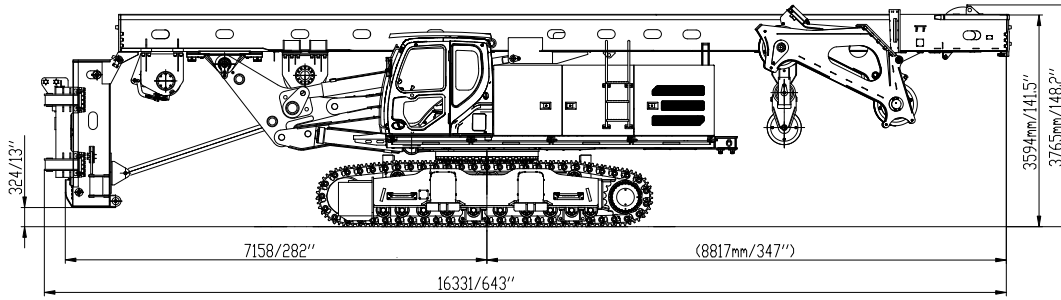
TECHNICAL SPECIFICATIONS

Description		US Units	Metric Units
Max. drilling diameter		78"	2000mm
Max. drilling depth		183'	56 m
Standard drilling depth- XK280/419/4/36		118'	36 m
In CFA mode with 6m extension rod and auger cleaner	Max. drilling diameter	31.5"	800 mm
	Max. drilling depth	62.3'	19m
Engine	Model	Cummins L9	
	Rated power	338 hp	252 kW
	Emission certification	Tier 4 Final	
Rotary Drive	Max. torque	177,015 ft lbs	240 kN·m
	Rotary speed	7-30 r/min	
	Spin-off	90r/min	
Crowd Winch	Max. crowd force	27.5 T	250 kN
	Max. Lifting force	27.5 T	250 kN
	Stroke	46'	14 m
Main Winch	Max lifting force of the first layer	26.5 T	240 kN
	Max cable speed	230ft /min	70 m/min
Auxiliary Winch	Lifting force of the first layer	11 T	100 kN
	Max cable speed	230 ft /min	70 m/min
Mast Inclination	Back-ward/ forward/lateral	15°/5°/3°	
Undercarriage	Max. travel speed	1.11Mph	1.8 km/h
	Max traction force	53.5 T	485 kN
	Max gradient	35%	
	Track shoe width	31.5"	800 mm
	Overall width (retracted~extended)	128~173"	3250~4400mm
	Overall length	225"	5715 mm
Working Dimension	Working condition	350×173×297"	8870×4400×22800 mm
	Weight (drilling tool ex-cluded)	187,425 lbs	85 t
Transport Dimension	Transport condition	690×128×147.8"	17530×3250×3755 mm
	Disassembled rig & Sled	133,160 lbs	60.4t
	Rotary head	11,250 lbs	5.1t
	Counterweight	13,230 lbs	9t
	Kelly bar- XK280/419/4/36 & Kelly guide	22,050 lbs	10t

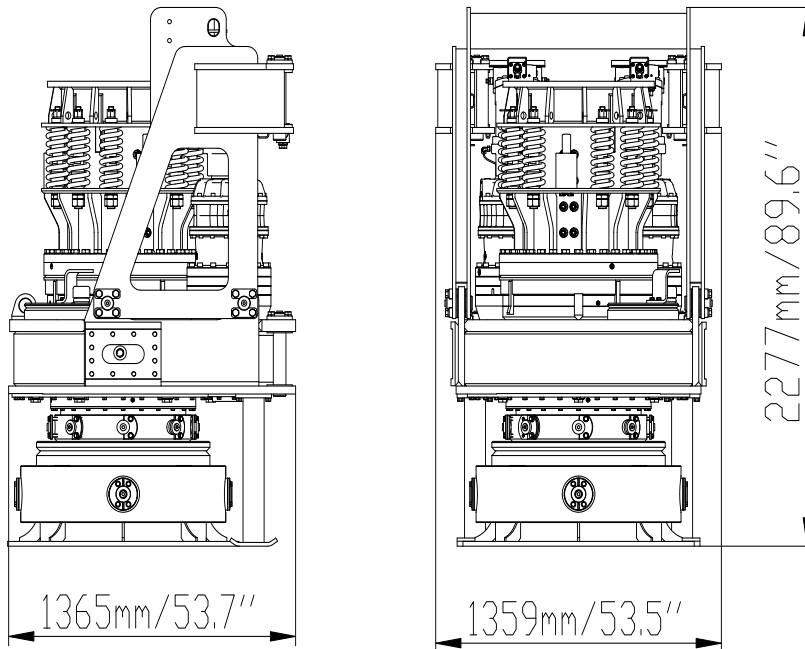


TECHNICAL SPECIFICATIONS

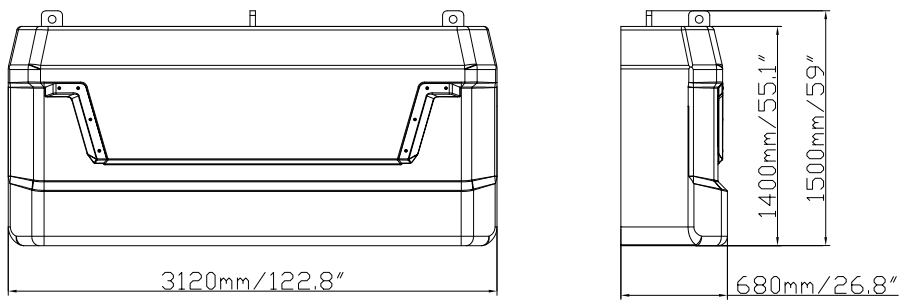




Disassembled rig & Sled: 60.4t / 133,160lbs Rotary head: 5.1t / 11,250 lbs
 Counterweight: 9t / 19,840 lbs Kelly bar-XK280/419/4/36 & kelly guide: 10t / 22,050 lbs



weight: 5.1t/ 11, 250 lbs



weight: 9t/19,840bs



Drilling depth										
4-part kelly	A		B		G		Hw		T	
	m	ft	m	ft	kg	lb	m	ft	m	ft
XK280/419/4/28	10.2	33.5	30.9	101.4	6720	14815	8.3	27.2	28.6	93.8
XK280/419/4/32	11.2	36.7	34.9	114.5	7500	16535	7.3	24	32.6	106.9
XK280/419/4/36	12.2	40	38.9	127.6	8280	18254	6.3	20.7	36.6	120
XK280/419/4/40	13.2	43.3	42.9	140.7	9062	19978	5.3	17.4	40.6	133.2
XK280/419/4/44	14.2	46.6	46.9	153.9	9840	21693.5	4.3	14.1	44.6	146.3
XK280/419/4/48	15.2	49.8	50.9	167	10600	23369	3.3	10.8	48.6	159.5
XK280/419/4/52	16.2	53.1	54.9	180.1	11400	25132.7	2.3	7.5	52.6	172.6

Remarks: top rotary from the ground is 3520mm when the rig is at mini luffing; the height of the drilling bucket is 1.5m (NL).

